

*the*  
**SOPHISTICATED**  
*collection*

**Women's**

Novara Jacket	09 & 18
Genoa Trouser	09
Teramo Dress	11 & 13
Scapoli Waistcoat	11 & 22
Numana Skirt	11 & 18
Miranda Trouser	12 & 21
Susa Jacket	12 & 20
Catania Jacket	22
Varese Trouser	22

**Women's Collection Summary**

Women's Jackets	26
Women's Trousers	27
Women's Waistcoat, Skirt & Dress	28

**Men's**

Avalino Jacket	08 & 14
Avalino Trouser	08 & 15
Busso Waistcoat	14
Imola Jacket	16
Imola Trouser	16

**Men's Collection Summary**

Men's Jackets	24
Men's Waistcoat & Trousers	25

**Fabric Information**

Specifications	07
Colour Choice / Aftercare	29

## SOPHISTICATED

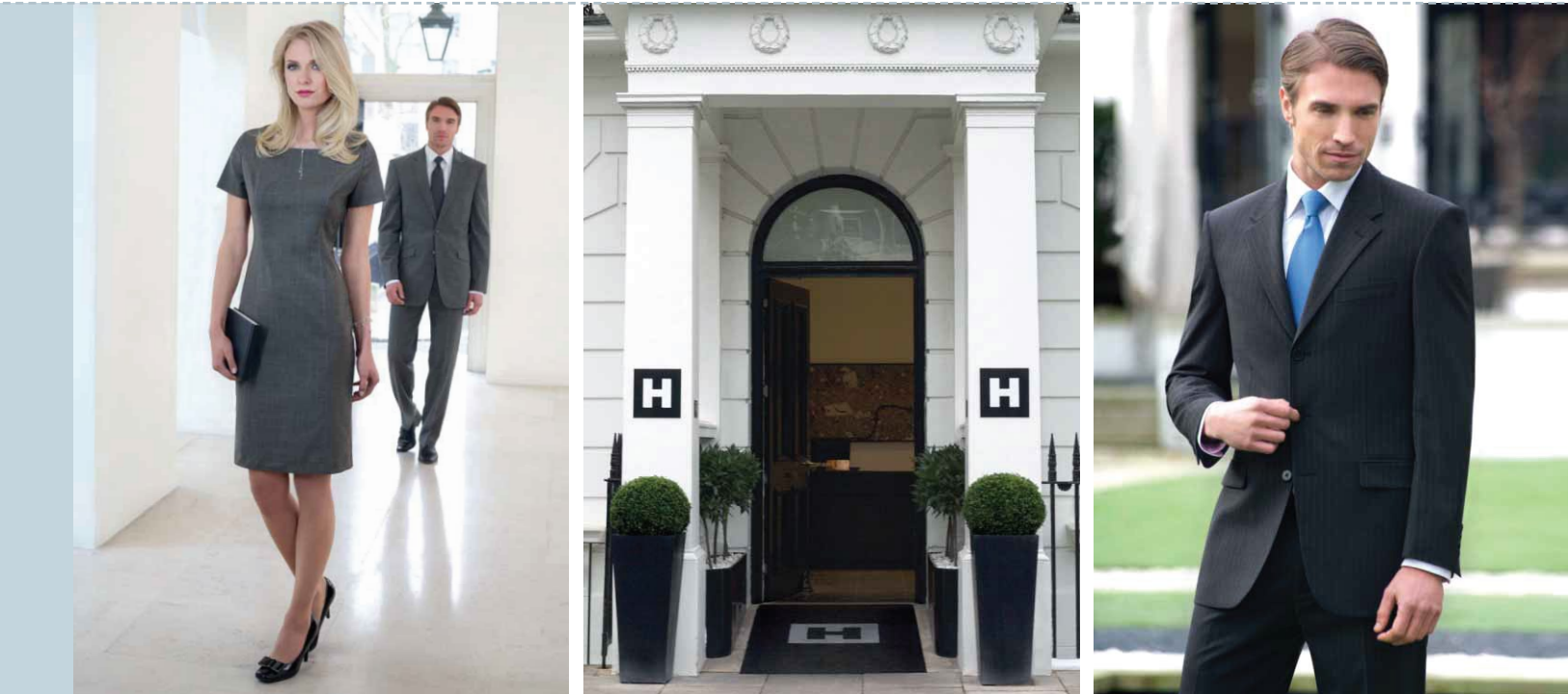
**Fabric:** 54% Polyester, 44% Wool, 2% Lycra

**Weight:** 270 grams per linear metre, Nanotech stain resistant finish

**Performance:** Grade 4/5 pilling. Taken to 60,000 rubs on a Martindale test

**Aftercare:** Machine washable at 40° or dry clean

**Available in 6 colours:** Navy, Navy Pinstripe, Charcoal, Black, Charcoal Pinstripe, Light Grey



### *14 piece collection*

A sophisticated, sharply styled and beautifully crafted **14 piece collection** of fashionable and timeless pieces, available in 6 colours. This collection is tailored from a specifically designed polyester/wool/Lycra fabric, manufactured to the **environmental Oeko-Tex Standard 100** and treated with **Nanotech stain-resistant finish**.

This **high performance yet lightweight range** is our best selling collection. We are delighted to **highlight the light grey colourway**, bringing a new dimension to this elegant collection, which is suitable for all

customer facing staff. The Sophisticated Collection is the range of choice for companies who require a premium corporate image and is particularly ideal for management, financial and banking sectors, hotels, airlines and airports.

#### **The Sophisticated Collection offers:**

- 3 ladies' jackets, 1 waistcoat
- 3 ladies' trousers, 1 skirt and a fabulous shift dress.
- 2 men's jackets, 1 waistcoat
- 2 men's trousers



**Avalino Jacket**

(Light Grey)

Single breasted jacket, slim fit,  
2 button front, side vents, 3 inside  
pockets, mobile phone pocket.

**Mantova Shirt**

(White)

Long sleeve, chest pocket,  
2 button cuff, contrast inner collar  
and cuff



*perfect  
partner*

**Avalino Trousers**

(Light Grey)

Flat front trousers, 2 side pockets,  
1 rear pocket



**Novara Jacket**

(Light Grey)

Semi fitted, 2 button jacket,  
lapel and pocket contrast detail,  
1 inside pocket, centre vent,  
tailored back panels.

**Genoa Trouser**

(Light Grey)

Slim leg, front hook fastening,  
2 side pockets, mock rear pockets,  
belt loops.

**Campania Blouse**

(Candy Stripe)

Long sleeve, double button fastening,  
contrast inner collar and cuff.



Novara Jacket &  
Genoa Trouser  
(Light Grey)

web

[www.lookcustom.co.uk](http://www.lookcustom.co.uk)

call

01923 800013

email

[sales@lookcustom.co.uk](mailto:sales@lookcustom.co.uk) | SC09



**Novara Jacket**

(Light Grey)

Semi fitted, 2 button jacket,  
lapel and pocket contrast detail,  
1 inside pocket, centre vent,  
tailored back panels.

**Campania Blouse**

(Candy Stripe)

Long sleeve, double  
button fastening,  
contrast inner  
collar and cuff.

**Avalino Jacket**

(Light Grey)

Single breasted jacket, slim fit,  
2 button front, side vents,  
3 inside pockets, mobile  
phone pocket.

**Mantova Shirt**

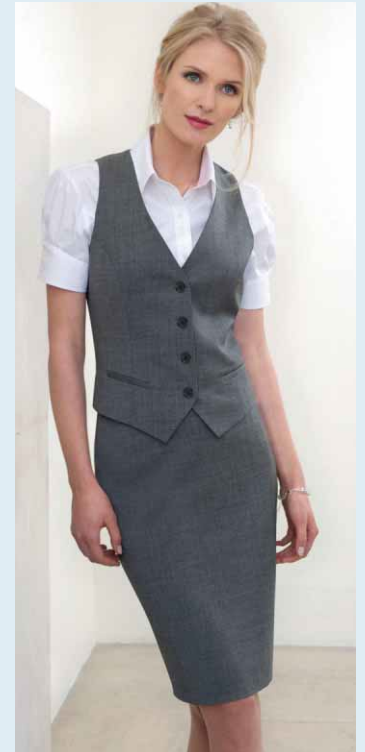
(White)

Long sleeve, chest pocket,  
2 button cuff, contrast inner  
collar and cuff.

**Teramo Dress**

(Light Grey)

Shift dress with princess seam, short sleeve, centre vent, stretch lining.



*create  
a look*

**Scapoli Waistcoat**

(Light Grey)

Cloth backed, 2 welt pockets, 4 button front.

**Numana Skirt**

(Light Grey)

Straight skirt, centre vent, shaped back panels, full stretch lining.

**Liguria Blouse**

(White)

Short sleeve with cuff detail, double button fastening, contrast inner collar and cuff.



**Susa Jacket**

(Light Grey)

3 button jacket, rounded lapel  
and pockets, plain back.  
1 inside pocket.

**Miranda Trouser**

(Light Grey)

Low waist, flared leg, front double  
button fastening, key card pocket,  
mock rear pockets.

**Solaro Blouse**

(Lilac Stripe)

Long sleeve, double cuff with  
silk cuff knots.



**Teramo Dress**

(Light Grey)

Shift dress with princess seam,  
short sleeve, centre vent,  
stretch lining.

**Avalino Jacket**

(Light Grey)

Single breasted jacket, slim fit,  
2 button front, side vents,  
3 inside pockets, mobile  
phone pocket.

**Avalino Trouser**

(Light Grey)

Flat front trouser, 2 side pockets,  
1 rear pocket.



perfect  
*partner*

**Mantova Shirt**

(White)

Long sleeve, chest pocket,  
2 button cuff, contrast inner  
collar and cuff.



Avalino Jacket &  
Teramo Dress  
(Light Grey)

web

[www.lookcustom.co.uk](http://www.lookcustom.co.uk)

call

01923 800013

email

[sales@lookcustom.co.uk](mailto:sales@lookcustom.co.uk)

SC13



Wonderfully tailored, fashionable clothing which is machine washable and crafted from a *superfine* Polyester/Wool/Lycra fabric that feels great and has a wonderful drape.

**Avalino Jacket**  
(Charcoal Pinstripe)

**Bresso Shirt**  
(Lilac Stripe)



perfect  
*partner*

**Busso Waistcoat**  
(Navy Pinstripe)  
Cloth backed, 2 welt  
pockets, 5 button front.





## Avalino Jacket (Navy)

Single breasted jacket, slim fit, 2 button front, side vents, 3 inside pockets, mobile phone pocket



### Avalino Trousers

(Light Grey)

Flat front trouser, 2 side pockets, 1 rear pocket.

### Rapino Shirt

(White)

Long sleeve, chest pocket.

**Imola Jacket**  
(Charcoal Pinstripe)

**Imola Trouser**  
(Charcoal Pinstripe)  
Single pleat, 2 side  
pockets, 1 rear pocket.

**Mantova Shirt**  
(White)  
Long sleeve, chest pocket,  
2 button cuff, contrast inner  
collar and cuff.



## Imola Jacket

(Navy Pinstripe)  
Single breasted jacket,  
3 button front, centre  
vent, 3 inside pockets,  
mobile phone pocket

Bresso Shirt (White Herringbone)

A passion for  
*Fabrics*



perfect  
*partner*

Imola Trouser

(Navy)

Single pleat, 2 side  
pockets, 1 rear pocket.



*Ultimate city* **STYLE**

web

[www.lookcustom.co.uk](http://www.lookcustom.co.uk)

call

01923 800013

email

[sales@lookcustom.co.uk](mailto:sales@lookcustom.co.uk) | SC17





## Novara Jacket (Charcoal)

Semi fitted, 2 button jacket, lapel and pocket contrast detail, 1 inside pocket, centre vent, tailored back panels

**Solaro Blouse** (Pink Herringbone) Long sleeve, double cuff with silk cuff knots.

**Numana Skirt** (Charcoal) Straight skirt, centre vent, shaped back panels, full stretch lining.



### Genoa Trouser (Light Grey)

Slim leg, front hook fastening, 2 side pockets, mock rear pockets, belt loops.

### Novara Jacket

Pocket (Charcoal)

*Attention to  
detail*

Our Sophisticated Collection is tailored from the **finest wool** with Lycra fabric available. This high performance but *lightweight* range is our best selling collection.

A touch of  
*Elegance*



**Novara  
Jacket**  
(Navy)

**Solaro Blouse**  
(White Herringbone)



## Susa Jacket (Black)

3 button jacket,  
rounded lapel  
and pockets,  
1 inside pocket,  
plain back

**Solaro Blouse** (Pink Herringbone)



create  
a look

### **Solaro Blouse**

(Pink Herringbone)  
Long sleeve, double cuff  
with silk cuff knots.

### **Miranda Trouser**

(Black)  
Low waist, flared leg, front double  
button fastening, key card pocket,  
mock rear pockets.

*we search high and low*

for the *most elegant*

# FABRIC



**Susa Jacket**  
(Charcoal Pinstripe)

**Miranda Trouser**  
(Charcoal Pinstripe)

**Palena Blouse**  
(White)  
Long sleeve, tailored fit  
princess seams.





**Catania Jacket**  
(Navy Pinstripe)

**Varese Trouser**  
(Navy Pinstripe)  
Parallel leg trouser, single button  
front fastening, key card pocket.

**Solaro Blouse**  
(White Herringbone)  
Long sleeve, double cuff  
with silk cuff knots.



*matches  
beautifully*

**Scapoli Waistcoat**  
(Navy Pinstripe)  
Cloth backed, 2 welt pockets  
4 button front.

## Catania Jacket

(Charcoal)

Single breasted,  
3 button jacket with  
2 slanted flap pockets,  
1 inside pocket, plain back

Solaro Blouse  
(Lilac Stripe)



superbly tailored  
collection



# SOPHISTICATED

*men*



**Avalino Jacket** (Charcoal Pinstripe)  
Single breasted jacket, slim fit,  
2 button front, side vents, 3 inside pockets,  
mobile phone pocket.

Machine washable.  
54% Polyester, 44% Wool, 2% Lycra.

**Sizes:** 36 - 48 short  
36 - 50 regular  
38 - 48 long

**Codes & Colours:**  
5647A Navy  
5647B Navy Pinstripe  
5647C Charcoal  
5647D Black  
5647F Charcoal Pinstripe  
5647G Light Grey



**Imola Jacket** (Navy Pinstripe)  
Single breasted jacket, 3 button front, centre  
vent, 3 inside pockets, mobile phone pocket.

Machine washable.  
54% Polyester, 44% Wool, 2% Lycra.

**Sizes:** 36 - 48 short  
36 - 54 regular  
38 - 48 long

**Codes & Colours:**  
5646A Navy  
5646B Navy Pinstripe  
5646C Charcoal  
5646D Black  
5646F Charcoal Pinstripe

*confident and professional with that added touch of sophistication*



**Busso Waistcoat** (Charcoal Pinstripe)  
Cloth backed, 2 welt pockets, 5 button front.

Machine washable.  
54% Polyester, 44% Wool, 2% Lycra.

**Sizes:** 36 - 50 regular

**Codes & Colours:**

1074A Navy  
1074B Navy Pinstripe  
1074C Charcoal  
1074D Black  
1074F Charcoal Pinstripe  
1074G Light Grey



**Avalino Trousers** (Light Grey)  
Flat front trouser, 2 side pockets, 1 rear pocket.

Machine washable.  
54% Polyester, 44% Wool, 2% Lycra.

**Sizes:** 28 - 44 waist in leg lengths  
S-29.5", R-31.5", L-33"  
& 36" unfinished

**Codes & Colours:**

8387A Navy  
8387B Navy Pinstripe  
8387C Charcoal  
8387D Black  
8387F Charcoal Pinstripe  
8387G Light Grey



**Imola Trousers** (Black)  
Single pleat, 2 side pockets, 1 rear pocket.

Machine washable.  
54% Polyester, 44% Wool, 2% Lycra.

**Sizes:** 28 - 48 waist in leg lengths  
S-29.5", R-31.5", L-33"  
& 36" unfinished

**Codes & Colours:**

8314A Navy  
8314B Navy Pinstripe  
8314C Charcoal  
8314D Black  
8314F Charcoal Pinstripe



# SOPHISTICATED

*women*



**Novara Jacket (Navy)**

Semi fitted, 2 button jacket, lapel and pocket contrast detail, 1 inside pocket, centre vent, tailored back panels.

Machine washable.  
54% Polyester, 44% Wool, 2% Lycra.

**Sizes:** 6 - 16 petite  
6 - 24 regular  
8 - 18 long

**Codes & Colours:**

2222A Navy  
2222B Navy Pinstripe  
2222C Charcoal  
2222D Black  
2222F Charcoal Pinstripe  
2222G Light Grey



**Susa Jacket (Black)**

3 button jacket, rounded lapel and pockets, 1 inside pocket, plain back.

Machine washable.  
54% Polyester, 44% Wool, 2% Lycra.

**Sizes:** 6 - 16 petite  
6 - 24 regular  
8 - 18 long

**Codes & Colours:**

2179A Navy  
2179B Navy Pinstripe  
2179C Charcoal  
2179D Black  
2179F Charcoal Pinstripe  
2179G Light Grey



**Catania Jacket (Charcoal)**

Single breasted, 3 button jacket with 2 slanted flap pockets, 1 inside pocket, plain back.

Machine washable.  
54% Polyester, 44% Wool, 2% Lycra.

**Sizes:** 6 - 16 petite  
6 - 24 regular  
10 - 24 long

**Codes & Colours:**

2176A Navy  
2176B Navy Pinstripe  
2176C Charcoal  
2176D Black  
2176F Charcoal Pinstripe

*tailored from a high performance, lightweight yet superfine fabric manufactured to the environmental Oeko-Tex Standard 100 and treated with Nanotech stain-resist finish*



**Genoa Trousers** (Light Grey)  
Slim leg, front hook fastening,  
2 side pockets, mock rear  
pockets, belt loops.

Machine washable.  
54% Polyester, 44% Wool, 2% Lycra.

**Sizes:** 6 - 24 waist in leg lengths  
S-27", R-29", L-31", XL-33"  
& 36" unfinished

**Codes & Colours:**

2234A Navy  
2234B Navy Pinstripe  
2234C Charcoal  
2234D Black  
2234F Charcoal Pinstripe  
2234G Light Grey



**Miranda Trousers** (Charcoal)  
Low waist, flared leg, front double button  
fastening, key card pocket, mock rear pockets.

Machine washable.  
54% Polyester, 44% Wool, 2% Lycra.

**Sizes:** 6 - 24 waist in leg lengths  
S-27", R-29", L-31", XL-33"  
& 36" unfinished

**Codes & Colours:**

2181A Navy  
2181B Navy Pinstripe  
2181C Charcoal  
2181D Black  
2181F Charcoal Pinstripe  
2181G Light Grey



**Varese Trousers** (Black)  
Parallel leg trouser, single button  
front fastening, key card pocket.

Machine washable.  
54% Polyester, 44% Wool, 2% Lycra.

**Sizes:** 6 - 24 waist in leg lengths  
S-27", R-29", L-31", XL-33"  
& 36" unfinished

**Codes & Colours:**

2109A Navy  
2109B Navy Pinstripe  
2109C Charcoal  
2109D Black  
2109F Charcoal Pinstripe

## SOPHISTICATED

*women*



**Scapoli Waistcoat** (Navy Pinstripe)  
Cloth backed, 2 welt pockets  
4 button front.

Machine washable.  
54% Polyester, 44% Wool, 2% Lycra.

**Sizes:** 6 - 24 regular  
10 - 16 long

**Codes & Colours:**

2200A Navy  
2200B Navy Pinstripe  
2200C Charcoal  
2200D Black  
2200F Charcoal Pinstripe  
2200G Light Grey



**Numana Skirt** (Light Grey)  
Straight skirt, centre vent, shaped back  
panels, full stretch lining.

Machine washable.  
54% Polyester, 44% Wool, 2% Lycra.

**Sizes:** 6 - 24 regular - 22"  
8 - 24 long - 25"  
8 - 24 x-long - 27"

**Codes & Colours:**

2224A Navy  
2224B Navy Pinstripe  
2224C Charcoal  
2224D Black  
2224F Charcoal Pinstripe  
2224G Light Grey



**Teramo Dress** (Light Grey)  
Shift dress with princess seam,  
short sleeve, centre vent, stretch lining.

Machine washable.  
54% Polyester, 44% Wool, 2% Lycra.

**Sizes:** 6 - 24 regular

**Codes & Colours:**

2238A Navy  
2238C Charcoal  
2238D Black  
2238G Light Grey



## Fabric Colour Choice

Our SOPHISTICATED collection is available in 6 fabric colour choices.



A. Navy



B. Navy Pinstripe



C. Charcoal



D. Black



F. Charcoal Pinstripe



G. Light Grey



Sophisticated Collection lining



## Garment Washcare Instructions

### Washing

For the best results ensure that the suit is washed separately & machine wash as wool. Garments will need to be removed immediately from the machine when the cycle has ended.

### Drying

Place the jacket on the hanger, gently shake and re-shape by straightening seams.  
Fold the trousers to the front creases and hang over the bar on garment hanger.  
Allow both garments to dry naturally & keep away from direct heat.  
Do not tumble dry.

### Finishing

If required, press the garments using a cool iron over a damp cloth.

Alternatively, garments from the Sophisticated Collection can be dry cleaned.



*the*  
**NEW**  
**PERFORMANCE**  
*collection*

**Women's**

Ritz Jacket	32
Wyndham Skirt	32
Mayfair Jacket	34
Dorchester Trouser	35
Connaught Jacket	36
Grosvenor Trouser	36

**Women's Collection Summary**

Women's Jackets	42
Women's Trousers & Skirt	43

**Men's**

Aldwych Jacket	38
Aldwych Trouser	39
Langham Jacket	40
Langham Trouser	41

**Men's Collection Summary**

Men's Jackets & Trousers	44
--------------------------	----

**Fabric Information**

Specifications	31
Colour Choice / Washcare	47

web

[www.lookcustom.co.uk](http://www.lookcustom.co.uk)

call

01923 800013

email

[sales@lookcustom.co.uk](mailto:sales@lookcustom.co.uk)

## NEW PERFORMANCE

**Fabric:** 54% Polyester, 44% Wool, 2% Lycra

**Weight:** 325 grams per linear metre

**Performance:** Grade 4/5 pilling. Taken to 80,000 rubs on a Martindale test

**Aftercare:** Machine washable at 40° or dry clean

**Available in 5 colours:** Navy, Navy Shadow Stripe, Charcoal, Black, Navy Blue Pinstripe



### *10 piece collection*

The New Performance Collection offers unrivalled performance whilst maintaining all the finesse and style synonymous with our Corporate Tailoring.

The **10 piece collection** is tailored from a fine yet incredibly strong polyester/wool/Lycra blend fabric and offers options for all wearers, with 10 styles and 5 colours.

This weight of fabric is **ideal for environments that demand the ultimate performance** from their corporate clothing. The fabric is **crease resistant thanks to high-twist yarns**, and is manufactured to

the **environmental Oeko-Tex Standard 100**. The New Performance Collection is perfect for many arenas, including security personnel, hotels, hospitality, councils, facility management companies and the transport industry.

#### **The New Performance Collection offers:**

- 3 ladies' jackets
- 2 ladies' trousers, 1 skirt
- 2 men's jackets
- 2 men's trousers



web

[www.lookcustom.co.uk](http://www.lookcustom.co.uk)

call

01923 800013

email

[sales@lookcustom.co.uk](mailto:sales@lookcustom.co.uk)

NP31





## Ritz Jacket (Black)

3 button jacket, peaked lapels, 1 inside pocket, tailored back panels, centre vent

**Wyndham Skirt** (Black) Straight skirt, centre vent, shaped back panels, full stretch lining.

**Solaro Blouse** (Pink/Blue Stripe) Long sleeve, double cuff with silk cuff knots.



**Wyndham Skirt**  
(Black)

attention to  
*detail*

This weight of fabric is ideal for *environments that demand the ultimate performance* from corporate clothing.



A touch of  
*Luxury*



**Ritz  
Jacket**

(Navy Blue Pinstripe)

**Palena Blouse**  
(White)

*we search high and low*  
for the *best performing*  
**FABRIC**

Our New Performance Collection offers unrivalled performance whilst maintaining all of the *finesse and style* that the Look Custom supplied Business Corporate Tailoring has become famous for.



matches  
*beautifully*

**Palena Blouse** (Pink)  
Long sleeve, tailored fit  
princess seams.

**Mayfair Jacket**  
(Navy)

3 button jacket, rounded  
lapel and pockets,  
1 inside pocket,  
plain back

**Campania Blouse** (Sky Blue/Magenta Stripe)





**Mayfair Jacket**  
(Navy Shadow Stripe)

**Dorchester Trousers**  
(Navy Shadow Stripe)  
Low waist, flared leg, front  
double button fastening,  
key card pocket, mock  
rear pockets, half lined,  
belt loops.

**Palena Blouse**  
(Pink)

Mayfair Jacket &  
Dorchester Trousers  
(Navy Shadow Stripe)

web

[www.lookcustom.co.uk](http://www.lookcustom.co.uk)

call

01923 800013

email

[sales@lookcustom.co.uk](mailto:sales@lookcustom.co.uk) | NP35



**Connaught Jacket** (Charcoal)



**Grosvenor Trousers** (Charcoal) Parallel leg trouser, single button front fastening, key card pocket, half lined, belt loops.



## Connaught Jacket

(Charcoal)

2 button jacket, notch  
lapel, 1 inside pocket,  
centre vent

Campania Blouse

(White)



matches  
*beautifully*

Perano Blouse

(Blue/White Stripe)

Long sleeve, tailored fit  
princess seams.



*we search high and low*  
for the *best performing*  
**FABRIC**



## Aldwych Jacket

(Charcoal)

Single breasted jacket,  
2 button front, side vents,  
3 inside pockets, mobile  
phone pocket

### Mantova Shirt

(Sky Blue/Magenta Stripe)

A passion for  
*Fabrics*



perfect  
*partner*

### Bresso Shirt

(Blue Herringbone)

Long Sleeve, chest pocket,  
double cuff with silk cuff knots.



*Ultimate city* **STYLE**

**Aldwych Jacket**  
(Charcoal)

**Aldwych Trouser**  
(Charcoal)  
Flat front trouser, 2 side  
pockets, 1 rear pocket

**Bresso Shirt**  
(White Herringbone)





**Langham Jacket**  
(Navy Blue Pinstripe)

### Bresso Shirt

(Blue Herringbone)  
Long Sleeve, chest pocket,  
double cuff with silk cuff knots.

# Langham Jacket

(Navy)

Single breasted jacket, 3 button front, centre vent, 3 inside pockets, mobile phone pocket

Rapino Shirt  
(White)

superbly tailored  
collection



perfect  
*partner*

Langham Trouser

(Navy Blue Pinstripe)

Single pleat, 2 side pockets, 1 rear pocket.



web

[www.lookcustom.co.uk](http://www.lookcustom.co.uk)

call

01923 800013

email

[sales@lookcustom.co.uk](mailto:sales@lookcustom.co.uk)

NP41



## NEW PERFORMANCE

*women*



**Ritz Jacket** (Navy Blue Pinstripe)  
3 button jacket, peaked lapels, 1 inside pocket, tailored back panels, centre vent.

Machine washable.  
54% Polyester, 44% Wool, 2% Lycra.

**Sizes:** 6 - 16 petite  
6 - 24 regular  
8 - 18 long

**Codes & Colours:**

2227A Navy  
2227B Navy Shadow Stripe  
2227C Charcoal  
2227D Black  
2227E Navy Blue Pinstripe



**Mayfair Jacket** (Navy)  
3 button jacket, rounded lapel and pockets, 1 inside pocket, plain back.

Machine washable.  
54% Polyester, 44% Wool, 2% Lycra.

**Sizes:** 6 - 16 petite  
6 - 24 regular  
8 - 18 long

**Codes & Colours:**

2228A Navy  
2228B Navy Shadow Stripe  
2228C Charcoal  
2228D Black  
2228E Navy Blue Pinstripe



**Connaught Jacket** (Charcoal)  
2 button jacket, notch lapel, 1 inside pocket, centre vent.

Machine washable.  
54% Polyester, 44% Wool, 2% Lycra.

**Sizes:** 6 - 16 petite  
6 - 24 regular  
8 - 24 long

**Codes & Colours:**

2226A Navy  
2226B Navy Shadow Stripe  
2226C Charcoal  
2226D Black  
2226E Navy Blue Pinstripe

*tailored from a superfine but incredibly strong Polyester/Wool/Lycra blend fabric*



**Grosvenor Trousers** (Charcoal)  
Parallel leg trouser, single button front fastening, key card pocket, half lined, belt loops.

Machine washable.  
54% Polyester, 44% Wool, 2% Lycra.

**Sizes:** 6 - 24 waist in leg lengths  
S-27", R-29", L-31", XL-33"  
& 36" unfinished

**Codes & Colours:**

2231A Navy  
2231B Navy Shadow Stripe  
2231C Charcoal  
2231D Black  
2231E Navy Blue Pinstripe



**Dorchester Trousers** (Charcoal)  
Low waist, flared leg, front double button fastening, key card pocket, mock rear pockets, half lined, belt loops.

Machine washable.  
54% Polyester, 44% Wool, 2% Lycra.

**Sizes:** 6 - 24 waist in leg lengths  
S-27", R-29", L-31", XL-33"  
& 36" unfinished

**Codes & Colours:**

2232A Navy  
2232B Navy Shadow Stripe  
2232C Charcoal  
2232D Black  
2232E Navy Blue Pinstripe



**Wyndham Skirt** (Navy Blue Pinstripe)  
Straight skirt, centre vent, shaped back panels, full stretch lining.

Machine washable.  
54% Polyester, 44% Wool, 2% Lycra.

**Sizes:** 6 - 24 regular - 22"  
8 - 24 long - 25"  
8 - 24 x-long - 27"

**Codes & Colours:**

2229A Navy  
2229B Navy Shadow Stripe  
2229C Charcoal  
2229D Black  
2229E Navy Blue Pinstripe

## NEW PERFORMANCE

*men*



**Aldwych Jacket** (Charcoal)  
Single breasted jacket,  
2 button front, side vents,  
3 inside pockets, mobile phone pocket.

Machine washable.  
54% Polyester, 44% Wool, 2% Lycra.

**Sizes:** 36" - 48" short  
36" - 50" regular  
38" - 48" long

**Codes & Colours:**

3125A Navy  
3125C Charcoal  
3125D Black



**Aldwych Trouser** (Charcoal)  
Flat front trouser, 2 side  
pockets, 1 rear pocket.

Machine washable.  
54% Polyester, 44% Wool, 2% Lycra.

**Sizes:** 28" - 44" waist in leg lengths  
S-29.5", R-31.5", L-33"  
& 36" unfinished

**Codes & Colours:**

8557A Navy  
8557C Charcoal  
8557D Black

*ideal for environments that demand the ultimate performance from corporate clothing*



#### Langham Jacket (Navy)

Single breasted jacket, 3 button front, centre vent, 3 inside pockets, mobile phone pocket.

Machine washable.  
54% Polyester, 44% Wool, 2% Lycra.

**Sizes:** 36" - 48" short  
36" - 54" regular  
38" - 48" long

#### Codes & Colours:

5984A Navy  
5984B Navy Shadow Stripe  
5984C Charcoal  
5984D Black  
5984E Navy Blue Pinstripe



#### Langham Trouser (Navy)

Single pleat, 2 side pockets, 1 rear pocket.

Machine washable.  
54% Polyester, 44% Wool, 2% Lycra.

**Sizes:** 28" - 48" waist in leg lengths  
S-29.5", R-31.5", L-33"  
& 36" unfinished

#### Codes & Colours:

8525A Navy  
8525B Navy Shadow Stripe  
8525C Charcoal  
8525D Black  
8525E Navy Blue Pinstripe

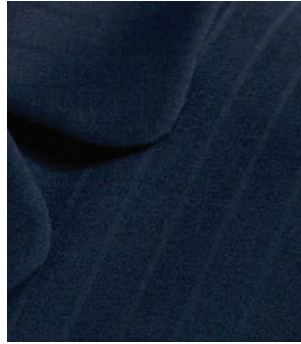


# Fabric Colour Choice

Our NEW PERFORMANCE collection is available in 5 fabric colour choices.



A. Navy



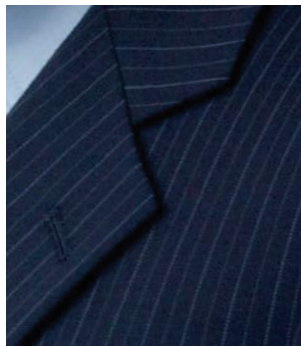
B. Navy Shadow Stripe



C. Charcoal



D. Black



E. Navy Blue Pinstripe



New Performance Collection  
menswear lining



New Performance Collection  
ladieswear lining



## Garment Washcare Instructions

### Washing

For the best results ensure that the suit is washed separately & machine wash as wool. Garments will need to be removed immediately from the machine when the cycle has ended.

### Drying

Place the jacket on the hanger, gently shake and re-shape by straightening seams.  
Fold the trousers to the front creases and hang over the bar on garment hanger.  
Allow both garments to dry naturally & keep away from direct heat.  
Do not tumble dry.

### Finishing

If required, press the garments using a cool iron over a damp cloth.

Alternatively, garments from the New Performance Collection can be dry cleaned.

web

[www.lookcustom.co.uk](http://www.lookcustom.co.uk)

call

01923 800013

email

[sales@lookcustom.co.uk](mailto:sales@lookcustom.co.uk) | NP47

*the*  
**CORPORATE**  
**FASHION**  
*collection*

**Women's**

Apulia Jacket	52
Taranto Skirt	52
Udine Trouser	53
Aprilla Jacket	54
Bergamo Waistcoat	55
Como Jacket	56
Andretta Trouser	59

**Women's Collection Summary**

Women's Jackets	58
Women's Trousers	59
Women's Skirt & Waistcoat	60

**Men's**

New Giglio Jacket	50
Giglio Trouser	50
Bari Waistcoat	51

**Men's Collection Summary**

Men's Jacket, Waistcoat & Trouser	61
-----------------------------------	----

**Fabric Information**

Specifications	49
Colour Choice / Washcare	63

## CORPORATE FASHION

**Fabric:** 67% Polyester, 30% Wool, 3% Lycra Weft stretch

**Weight:** 270 grams per linear metre, Nanotech stain resistant finish

**Performance:** Grade 4/5 pilling. Taken to 50,000 rubs on a Martindale test

**Aftercare:** Machine washable at 40° or dry clean

**Available in 4 colours:** Navy, Navy Multi Stripe, Black, Black Multi Stripe



### *10 piece collection*

Vibrant, design led corporate suiting in contemporary styles and fabrics. The Corporate Fashion Collection is **tailored from a superfine polyester/wool/Lycra blend fabric** and follows High Street trends to provide an exciting, modern look for all wearers.

The **10 piece collection** is available in 4 colourways and offers some high fashion, slim fit pieces, as well as more classic complementary garments. This

collection is ideal for all boutique hotels, bars, restaurants, retailers and building societies who wish to portray a vibrant corporate image.

#### **The Corporate Fashion Collection offers:**

- 3 ladies' jackets, 1 waistcoat
- 2 ladies' trousers, 1 skirt
- 1 men's jacket, 1 waistcoat
- 1 men's trouser



web

[www.lookcustom.co.uk](http://www.lookcustom.co.uk)

call

01923 800013

email

[sales@lookcustom.co.uk](mailto:sales@lookcustom.co.uk) | CF49

**New Giglio Jacket**

(Navy Multi Stripe)

**Giglio Trousers**

(Navy Multi Stripe)

Flat front trousers,  
2 side pockets,  
1 rear pocket.

**Mantova Shirt**

(Sky Blue/Magenta Stripe)

Long sleeve, chest pocket,  
2 button cuff, contrast inner  
collar and cuff.





Our Corporate Fashion Collection is ideal for boutique hotels, retail and travel companies, bars and restaurants and all professionals who want to create a *vibrant corporate image*.

## New Giglio Jacket

(Navy Multi Stripe)  
Single breasted jacket,  
slim fit, 2 button front,  
side vents, ticket pocket,  
3 inside pockets,  
mobile phone pocket

**Mantova Shirt**  
(White)



perfect  
*partner*

**Bari Waistcoat** (Navy Multi Stripe)  
Cloth backed, 2 welt  
pockets, 5 button front.

**Bresso Shirt** (White Herringbone)  
Long Sleeve, chest pocket,  
double cuff with silk cuff knots.



**Apulia Jacket**  
(Black Multi Stripe)

**Taranto Skirt**  
(Black Multi Stripe)  
Straight skirt, stretch lining,  
detailed waistband, 2 mock  
pockets, centre vent.

**Campania Blouse**  
(White)  
Long sleeve, double  
button fastening,  
contrast inner  
collar and cuff.

## Apulia Jacket

(Black Multi Stripe)  
2 button, 2 flap &  
2 jett pockets,  
1 inside pocket,  
centre vent

Campania Blouse (Candy Stripe)

A touch of  
Style



create the  
*perfect suit*

**Udine Trousers**  
(Black Multi Stripe)  
Slim leg, front hook fastening,  
2 side pockets, mock rear  
pockets, belt loops.



*we search high and low*  
for the *latest*

# TRENDS

web

[www.lookcustom.co.uk](http://www.lookcustom.co.uk)

call

01923 800013

email

[sales@lookcustom.co.uk](mailto:sales@lookcustom.co.uk) | CF53



A fashionable, lightweight, *superbly tailored collection* of professional clothing.

A passion for  
*Fabrics*



*Aprilla Jacket*  
(Navy Multi Stripe)

corporate *fashion*  
**STYLING**



matches  
*beautifully*

**Bergamo Waistcoat** (Black Multi Stripe)  
Cloth backed, 2 welt pockets  
4 button front.



## Aprilla Jacket (Black)

1 button jacket, double breasted edge-stitched lapel, 2 slant pockets, 1 inside pocket, tailored fit, centre vent

### Andretta Trouser (Black)

Low waist, flared leg, front double button fastening, key card pocket, mock rear pockets, belt loops.

**Como Jacket**  
(Navy Multi Stripe)

**Tramonti Stretch Top**  
(White)  
Short sleeve, round neck.





## Como Jacket

(Black Multi Stripe)

3 button jacket,  
rounded lapel and  
pockets, 1 inside  
pocket, plain back

**Perano Blouse**

(Pink/Grey Stripe)

superbly styled  
*collection*



matches  
*beautifully*

**Taranto Skirt**

(Black Multi Stripe)

Straight skirt, stretch lining,  
detailed waistband, 2 mock  
pockets, centre vent.



create a  
vibrant corporate

# IMAGE

web

[www.lookcustom.co.uk](http://www.lookcustom.co.uk)

call

01923 800013

email

[sales@lookcustom.co.uk](mailto:sales@lookcustom.co.uk)

CF57



## CORPORATE FASHION

*women*



**Apulia Jacket** (Black Multi Stripe)  
2 button, 2 flap & 2 jett pockets,  
1 inside pocket, centre vent.

Machine washable.  
67% Polyester, 30% Wool, 3% Lycra.

**Sizes:** 6 - 16 petite  
6 - 24 regular  
8 - 18 long

**Codes & Colours:**

2237A Navy  
2237B Navy Multi Stripe  
2237D Black  
2237E Black Multi Stripe



**Aprilla Jacket** (Navy Multi Stripe)  
1 button jacket, double breasted edge-stitched  
lapel, 2 slant pockets, 1 inside pocket,  
tailored fit, centre vent.

Machine washable.  
67% Polyester, 30% Wool, 3% Lycra.

**Sizes:** 6 - 16 petite  
6 - 18 regular  
10 - 18 long

**Codes & Colours:**

2184A Navy  
2184B Navy Multi Stripe  
2184D Black  
2184E Black Multi Stripe



**Como Jacket** (Black Multi Stripe)  
3 button jacket, rounded lapel and  
pockets, 1 inside pocket, plain back.

Machine washable.  
67% Polyester, 30% Wool, 3% Lycra.

**Sizes:** 6 - 16 petite  
6 - 24 regular  
8 - 18 long

**Codes & Colours:**

2186A Navy  
2186B Navy Multi Stripe  
2186D Black  
2186E Black Multi Stripe

*wonderfully tailored fashionable clothing which is machine washable*



**Andretta Trousers** (Navy)

Low waist, flared leg, front double button fastening, key card pocket, mock rear pockets, belt loops.

Machine washable.  
67% Polyester, 30% Wool, 3% Lycra.

**Sizes:** 6 - 24 waist in leg lengths  
S-27", R-29", L-31", XL-33"  
& 36" unfinished

**Codes & Colours:**

2188A Navy  
2188B Navy Multi Stripe  
2188D Black  
2188E Black Multi Stripe



**Udine Trousers** (Navy Multi Stripe)

Slim leg, front hook fastening, 2 side pockets, mock rear pockets, belt loops.

Machine washable.  
67% Polyester, 30% Wool, 3% Lycra.

**Sizes:** 6 - 24 waist in leg lengths  
S-27", R-29", L-31", XL-33"  
& 36" unfinished

**Codes & Colours:**

2235A Navy  
2235B Navy Multi Stripe  
2235D Black  
2235E Black Multi Stripe

*this exceptional collection brings together a high fashion element  
combined with classic tailoring values*



**Taranto Skirt** (Black Multi Stripe)  
Straight skirt, stretch lining, detailed  
waistband, 2 mock pockets, centre vent.

Machine washable.  
67% Polyester, 30% Wool, 3% Lycra.

**Sizes:** 6 - 24 regular - 22"  
8 - 24 long - 25"  
8 - 24 x-long - 27"

**Codes & Colours:**

2236A Navy  
2236B Navy Multi Stripe  
2236D Black  
2236E Black Multi Stripe



**Bergamo Waistcoat** (Black)  
Cloth backed, 2 welt pockets  
4 button front.

Machine washable.  
67% Polyester, 30% Wool, 3% Lycra.

**Sizes:** 6 - 24 regular  
10 - 16 long

**Codes & Colours:**

2192A Navy  
2192B Navy Multi Stripe  
2192D Black  
2192E Black Multi Stripe



## CORPORATE FASHION

*men*



**New Giglio Jacket** (Navy Multi Stripe)  
Single breasted jacket, slim fit, 2 button front, side vents, ticket pocket, 3 inside pockets, mobile phone pocket.

Machine washable.  
67% Polyester, 30% Wool, 3% Lycra.

**Sizes:** 36" - 48" short  
36" - 50" regular  
38" - 48" long

**Codes & Colours:**

3157A Navy  
3157B Navy Multi Stripe  
3157D Black  
3157E Black Multi Stripe



**Bari Waistcoat** (Black)  
Cloth backed, 2 welt pockets, 5 button front.

Machine washable.  
67% Polyester, 30% Wool, 3% Lycra.

**Sizes:** 36" - 50" regular

**Codes & Colours:**

1072A Navy  
1072B Navy Multi Stripe  
1072D Black  
1072E Black Multi Stripe



**Giglio Trouser** (Black)  
Flat front trouser, 2 side pockets, 1 rear pocket.

Machine washable.  
67% Polyester, 30% Wool, 3% Lycra.

**Sizes:** 28" - 48" waist in leg lengths  
S-29.5", R-31.5", L-33"  
& 36" unfinished

**Codes & Colours:**

8431A Navy  
8431B Navy Multi Stripe  
8431D Black  
8431E Black Multi Stripe

## Fabric Colour Choice

Our CORPORATE FASHION collection is available in 4 fabric colour choices.



A. Navy



B. Navy Multi Stripe



D. Black



E. Black Multi Stripe



Corporate Fashion Collection lining



**nanotech**  
Nanotech fabrics by Brook Taverner



## Garment Washcare Instructions

### Washing

For the best results ensure that the suit is washed separately & machine wash as wool. Garments will need to be removed immediately from the machine when the cycle has ended.

### Drying

Place the jacket on the hanger, gently shake and re-shape by straightening seams.  
Fold the trousers to the front creases and hang over the bar on garment hanger.  
Allow both garments to dry naturally & keep away from direct heat.  
Do not tumble dry.

### Finishing

If required, press the garments using a cool iron over a damp cloth.

Alternatively, garments from the Corporate Fashion Collection can be dry cleaned.

web

[www.lookcustom.co.uk](http://www.lookcustom.co.uk)

call

01923 800013

email

[sales@lookcustom.co.uk](mailto:sales@lookcustom.co.uk)

CF63



*the*  
**CONCEPT**  
*collection*

**Women's**

Hera Jacket	66
Theta Trouser	66
Zeta Jacket	70
Sigma Skirt	70
Omega Waistcoat	70

**Women's Collection Summary**

Women's Jackets & Waistcoat	74
Women's Trouser & Skirt	75

**Men's**

Zeus Jacket	68
Gamma Waistcoat	69
Alpha Jacket	72
Delta Trouser	73

**Men's Collection Summary**

Men's Jackets	76
Men's Waistcoat & Trouser	77

**Fabric Information**

Specifications	65
Colour Choice / Washcare	79

## CONCEPT

**Fabric:** 65% Polyester, 35% Viscose

**Weight:** 390 grams per linear metre

**Performance:** Grade 4/5 piling. Taken to 80,000 rubs on a Martindale test

**Aftercare:** Machine washable at 30°, not suitable for dry cleaning

**Personalisation:** Our unique "Sew Easy Embroidery System" on all jackets

**Available in 3 colours:** Navy, Charcoal, Black



### *9 piece collection*

**Superbly crafted** from an **incredibly strong and durable polyester/viscose fabric**, the Concept Collection offers unrivalled performance and resilience whilst maintaining the style and elegance synonymous with Look Custom supplied Corporate Tailoring. The **9 piece collection** is available in 3 colourways and offers market-leading value for money, so it is easy to see why it is the first choice for security, facility management, hospitality staff and the transport industry.

The weight of the fabric used is ideal for outside wear and environments which demand the very best in durability. The jackets benefit from the **Sew Easy Embroidery System** - a discrete zip allowing simple and efficient personalisation and decoration.

#### **The Concept Collection offers:**

- 2 ladies' jackets, 1 waistcoat
- 1 ladies' trouser, 1 skirt
- 2 men's jackets, 1 waistcoat
- 1 men's trouser





**Hera Jacket**  
(Black only)

**Theta Trouser**  
(Black)

Low waist, flared leg, front double button fastening, key card pocket, mock rear pockets, belt loops.

**Campania Blouse**  
(Black/White Stripe)



## Hera Jacket

(Black only)

3 button jacket, peaked lapels, 1 inside pocket, tailored back panels, centre vent, Sew Easy Embroidery System

Campania Blouse

(Black/White Stripe)

**LOOK CUSTOM**  
LIMITED



*matches  
beautifully*

Campania Blouse

(Black/White Stripe)

Long sleeve, double button fastening, contrast inner collar and cuff.

*we search high and low  
for the most robust*

# FABRIC

web

[www.lookcustom.co.uk](http://www.lookcustom.co.uk)

call

01923 800013

email

[sales@lookcustom.co.uk](mailto:sales@lookcustom.co.uk) | CC67

The Collection offers unrivalled performance whilst *maintaining all of the style* that Look Custom supplied Corporate Tailoring Collections have become renowned for.



highly durable  
collection



**Zeus Jacket**  
(Charcoal)

**Mantova Shirt**  
(Black/White Stripe)

*durability with* **STYLE**





## perfect partner

**Gamma Waistcoat (Black)**  
6 button front, cloth backed,  
longer back with adjuster.

**Rapino Shirt (White)**  
Long sleeve, chest pocket.

## Zeus Jacket

(Black)

Single breasted jacket, 2 button front,  
side vents, 3 inside pockets, Sew Easy  
Embroidery System





**Zeta Jacket**  
(Navy)

**Sigma Skirt**  
(Navy)  
Straight skirt, centre vent.

**Palena Blouse**  
(White)  
Long sleeve, tailored fit  
princess seams.



create  
a look

**Omega Waistcoat**  
(Charcoal)  
6 button front, cloth backed,  
longer back with adjuster.

**Palena Blouse**  
(White)

The Concept Collection provides the *ideal solution* for those looking for matching men's and ladies' corporate tailoring at entry level pricing

## Zeta Jacket

(Charcoal)

Single breasted, 3 button jacket with 2 slanted flap pockets, plain back, Sew Easy Embroidery System

Perano Blouse

(White/Grey Stripe)



**Alpha Jacket**  
(Charcoal)

**Rapino Shirt**  
(White)  
Long sleeve, chest pocket.



## Alpha Jacket

(Navy)

Single breasted jacket,  
3 button front, centre  
vent, 3 inside pockets, Sew  
Easy Embroidery System

**Rapino Shirt**

(Pink)



*perfect  
partner*

**Delta Trousers**

(Charcoal)

Single pleat, 2 side  
pockets, 1 rear pocket.



web

[www.lookcustom.co.uk](http://www.lookcustom.co.uk)

call

01923 800013

email

[sales@lookcustom.co.uk](mailto:sales@lookcustom.co.uk) | CC73



## CONCEPT

*women*



**Zeta Jacket** (Charcoal)

Single breasted, 3 button jacket with 2 slanted flap pockets, plain back, Sew Easy Embroidery System.

Machine washable.  
65% Polyester, 35% Viscose.

**Sizes:** 8 - 16 petite  
6 - 24 regular  
10 - 18 long

**Codes & Colours:**

2219A Navy  
2219C Charcoal  
2219D Black



**Hera Jacket** (Black only)

3 button jacket, peaked lapels, 1 inside pocket, tailored back panels, centre vent, Sew Easy Embroidery System.

Machine washable.  
65% Polyester, 35% Viscose.

**Sizes:** 8 - 16 petite  
6 - 24 regular  
10 - 18 long

**Codes & Colours:**

2241D Black



**Omega Waistcoat** (Navy)

6 button front, cloth backed, longer back with adjuster.

Machine washable.  
65% Polyester, 35% Viscose.

**Sizes:** 6 - 24 regular

**Codes & Colours:**

2233A Navy  
2233C Charcoal  
2233D Black

*tailored from an incredibly strong and durable fabric,  
offers market leading value for money.*



**Theta Trousers** (Charcoal)

Low waist, flared leg, front double button fastening, key card pocket, mock rear pockets, belt loops.

Machine washable.  
65% Polyester, 35% Viscose.

**Sizes:** 6 - 24 waist in leg lengths  
S-27", R-29", L-31", XL-33"  
& 36" unfinished

**Codes & Colours:**

2220A Navy  
2220C Charcoal  
2220D Black



**Sigma Skirt** (Black)

Straight skirt, centre vent.

Machine washable.  
65% Polyester, 35% Viscose.

**Sizes:** 6 - 24 regular - 22"  
8 - 18 long - 25"

**Codes & Colours:**

2221A Navy  
2221C Charcoal  
2221D Black

## CONCEPT

*men*



**Zeus Jacket** (Charcoal)

Single breasted jacket, 2 button front, side vents, 3 inside pockets, Sew Easy Embroidery System.

Machine washable.  
65% Polyester, 35% Viscose.

**Sizes:** 36" - 48" short  
36" - 50" regular  
38" - 48" long

**Codes & Colours:**

3124A Navy  
3124C Charcoal  
3124D Black



**Alpha Jacket** (Navy)

Single breasted jacket, 3 button front, centre vent, 3 inside pockets, Sew Easy Embroidery System.

Machine washable.  
65% Polyester, 35% Viscose.

**Sizes:** 38" - 44" short  
36" - 56" regular  
40" - 48" long

**Codes & Colours:**

5981A Navy  
5981C Charcoal  
5981D Black

*this fully machine washable collection offers unrivalled high-level performance*



**Gamma Waistcoat** (Black)  
6 button front, cloth backed,  
longer back with adjuster.

Machine washable.  
65% Polyester, 35% Viscose.

**Sizes:** 36" - 56" regular

**Codes & Colours:**

1094A Navy  
1094C Charcoal  
1094D Black

**Delta Trouser** (Charcoal)  
Single pleat, 2 side  
pockets, 1 rear pocket.

Machine washable.  
65% Polyester, 35% Viscose.

**Sizes:** 30" - 50" waist in leg lengths S-29.5",  
R-31.5", L-33" & 36" unfinished

**Codes & Colours:**

8515A Navy  
8515C Charcoal  
8515D Black



## Fabric Colour Choice

Our CONCEPT collection is available in 3 fabric colour choices.



A. Navy



C. Charcoal



D. Black



Concept Collection lining



Sew Easy Embroidery System



## Garment Washcare Instructions

### Washing

For the best results ensure that the suit is washed separately & machine wash at 30°. Garments will need to be removed immediately from the machine when the cycle has ended.

### Drying

Place the jacket on the hanger, gently shake and re-shape by straightening seams.  
Fold the trousers to the front creases and hang over the bar on garment hanger.  
Allow both garments to dry naturally & keep away from direct heat.  
Do not tumble dry.

### Finishing

If required, press the garments using a cool iron over a damp cloth.

The Concept Collection is not suitable for dry cleaning.

*the*  
**SHIRT & BLOUSE**  
*collection*



*16 piece collection*

Designed to complement our tailored ranges, our collection of beautifully made, contemporary business shirts and blouses is ideal for modern corporate life.

The collection offers **co-ordinating men's and women's business shirts** in easy-iron 100% superfine cotton or cotton-rich blends, either **short or long-sleeved** with button fastening or double cuffs. Complementing our shirts and blouses we have

practical women's tops in a **Lycra-blend easycare fabric, V or round neck** and in four stylish colours.

All fabrics meet **Oeko-Tex Standard 100** environmental requirements. We strongly believe in **attention to detail** – that's why our designers create garments with the look, fit, feel and performance you can rely on.

**Women's**

Solaro Long Sleeve Blouse	81
Campania Long Sleeve Blouse	82
Liguria Short Sleeve Blouse	82
Perano Long Sleeve Blouse	86
Pescara Short Sleeve Blouse	87
Palena Long Sleeve Blouse	88
Paduli Short Sleeve Blouse	89
Tufino V-Neck Stretch Top	90
Tramonti Round-Neck Stretch Top	90

**Men's**

Bresso Long Sleeve Shirt	81
Mantova Long Sleeve Shirt	84
Savona Short Sleeve Shirt	84
Rufina Long Sleeve Shirt	86
Roccella Short Sleeve Shirt	87
Rapino Long Sleeve Shirt	88
Rosello Short Sleeve Shirt	89



100% Superfine Cotton *Easy Iron*

## Women's Solaro Blouse & Men's Bresso Shirt



- Matching long sleeve double cuff shirt and blouse
- Tailored in soft, superfine cotton, ideal for any modern business environment.
- Easycare, easy iron & machine washable
- Complementary silk knots
- 100% Cotton

Sizes:

6 - 24 (women's Solaro blouse)

14.5" - 20" (men's Bresso shirt)



2218A White Herringbone (women's)  
7543A White Herringbone (men's)



2218B Blue Herringbone (women's)  
7543B Blue Herringbone (men's)



2218D Pink/Blue Stripe (women's)  
7543D Pink/Blue Stripe (men's)



2218C Pink Herringbone (women's)

7543E Lilac Stripe (men's)

2218E Lilac Stripe (women's)

web

[www.lookcustom.co.uk](http://www.lookcustom.co.uk)

call

01923 800013

email

[sales@lookcustom.co.uk](mailto:sales@lookcustom.co.uk)

SB81



## Cotton Rich *Easy Iron*

### Women's Campania Long Sleeve Blouse & Liguria Short Sleeve Blouse

- Cotton-rich long and short sleeve blouses
- Flattering fit, casually stylish, match men's Mantova and Savona shirts (except D shade)
- Contrast inner collar and cuff, double button fastening
- 55% Cotton, 45% Polyester • Machine washable
- Easycare and easy iron

Sizes: 6 - 24



2239D Candy Stripe



## Cotton Rich *Easy Iron*



2240C Black/White Stripe



Sky Blue/Magenta Stripe



2239A White



2239A White (L/S)  
2240A White (S/S)



2239B Sky Blue/Magenta Stripe (L/S)  
2240B Sky Blue/Magenta Stripe (S/S)



2239C Black/White Stripe (L/S)  
2240C Black/White Stripe (S/S)



2239D Candy Stripe (L/S)  
2240D Candy Stripe (S/S)

## Cotton Rich *Easy Iron*



7594A White (L/S)  
7595A White (S/S)



7594B Sky Blue/Magenta Stripe (L/S)  
7595B Sky Blue/Magenta Stripe (S/S)



7594C Black/White Stripe (L/S)  
7595C Black/White Stripe (S/S)



## Cotton Rich *Easy Iron*

7594C Black/  
White Stripe

### Men's Mantova Long Sleeve Shirt & Savona Short Sleeve Shirt

- Cotton-rich long and short sleeve shirts
- Casually stylish, match ladies' Campania and Liguria blouses
- Contrast inner collar and cuff, double button cuff, chest pocket
- 55% Cotton, 45% Polyester
- Machine washable
- Easycare and easy iron

Sizes: 14.5" - 20"



web

[www.lookcustom.co.uk](http://www.lookcustom.co.uk)

call

01923 800013

email

[sales@lookcustom.co.uk](mailto:sales@lookcustom.co.uk)

SB85

Cotton Rich *Easy Iron*

## Women's Perano Blouse & Men's Rufina Shirt

- Cotton-rich long sleeve blouses and shirts • Team up in style with intelligently co-ordinated fabrics
- 60% Cotton, 40% Polyester • Machine washable

Sizes: 6 - 24 (women's Perano blouse) 14.5" - 20" (men's Rufina shirt)



2215C Blue/White Stripe (women's)



2215A White/Grey Stripe (women's)  
7540A White/Grey Stripe (men's)



2215B Pink/Grey Stripe (women's)  
7540B Pink/Grey Stripe (men's)



2215C Blue/White Stripe (women's)  
7540C Blue/White stripe (men's)



## Cotton Rich *Easy Iron*



7542A White/Grey Stripe 7542B Pink/Grey Stripe 7542C Blue/White Stripe



2217A White/Grey Stripe 2217B Pink/Grey Stripe 2217C Blue/White Stripe

### Men's Roccella Shirt

- Cotton-rich, short sleeve men's shirt
- Functionally fashionable option for any corporate arena
- Easycare and easy iron
- 60% Cotton, 40% Polyester • Machine washable

Sizes: 14.5" - 20"

### Women's Pescara Blouse

- Cotton-rich, ladies' blouse with adjustable short sleeve
- Flattering fit, casually stylish and comfortable look
- Easycare and easy iron practicality
- 60% Cotton, 40% Polyester • Machine washable

Sizes: 6 - 24

## Cotton Rich *Easy Iron*



2214B Pink



2214C Blue



2214D Black



7539A White



7539C Blue



7539D Black

### Women's Palena Blouse

- Cotton-rich, long sleeve ladies' blouse
- Specifically designed for fit, comfort and style
- Easycare and easy iron practicality
- 55% Cotton, 45% Polyester • Machine washable

Sizes: 6 - 24 regular

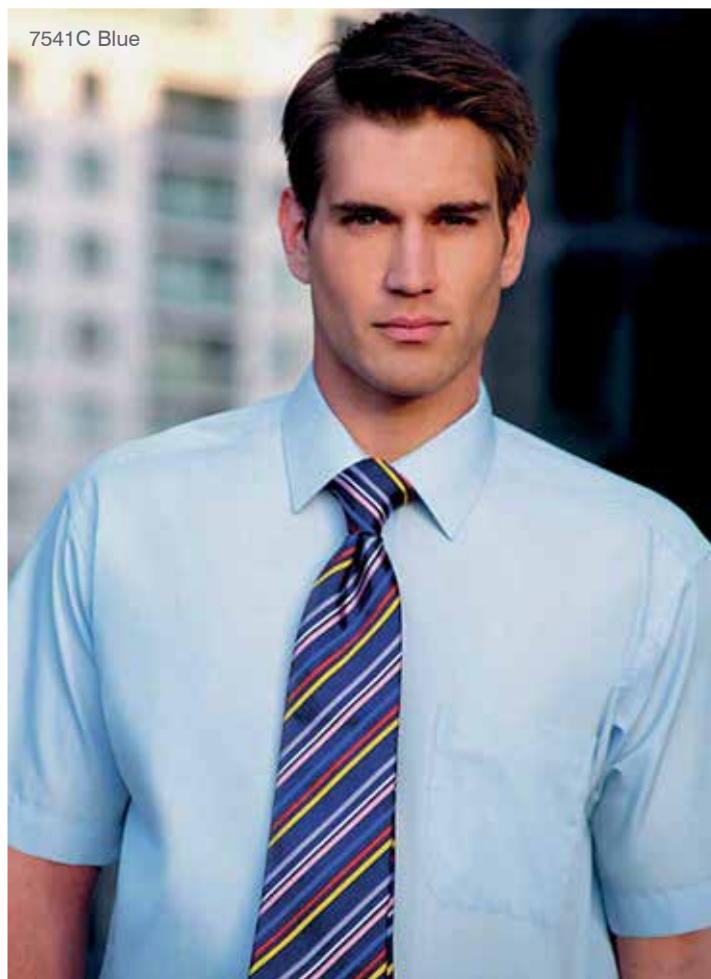
### Men's Rapino Shirt

- Cotton-rich long sleeve men's shirt, chest pocket
- Effortlessly stylish, contemporary tailoring
- Easycare and easy iron
- 55% Cotton, 45% Polyester • Machine washable

Sizes: 14.5" - 20"



## Cotton Rich *Easy Iron*



2216A White

2216B Pink

2216C Blue

7541A White

7541B Pink

7541D Black

### Women's Paduli Blouse

- Cotton-rich, short sleeve ladies' blouse
- Adjustable short sleeve
- Easycare and easy iron practicality
- 55% Cotton, 45% Polyester • Machine washable

Sizes: 6 - 24 regular

### Men's Rosello Shirt

- Cotton-rich short sleeve men's shirt, chest pocket
- A smart choice for the modern businessman
- Easycare and easy iron
- 55% Cotton, 45% Polyester • Machine washable

Sizes: 14.5" - 20"

web

[www.lookcustom.co.uk](http://www.lookcustom.co.uk)

call

01923 800013

email

[sales@lookcustom.co.uk](mailto:sales@lookcustom.co.uk)

SB89



2213A White



2213B Blue



2213C Pink



2213D Black

## Women's Tufino V-Neck Stretch Top

- Versatile V-neck top • Utilises the latest innovative fabric technology
- Exceptional stretch and performance
- Remains cool and comfortable under pressure
- Easy care practicality • 93% polyamide, 7% elastane • Machine washable

Sizes: XS (6), S (8 - 10), M (12 - 14), L (16 - 18), XL (20 - 22), XXL (24)



2212D Black



2212A White



2212B Blue



2212C Pink

## Women's Tramonti Round-Neck Stretch Top

- Elegant round-neck stretch top
- Utilises the latest innovative fabric technology
- Exceptional stretch and performance
- Remains cool and comfortable under pressure
- Easy care practicality • 93% polyamide, 7% elastane • Machine washable

Sizes: XS (6), S (8 - 10), M (12 - 14), L (16 - 18), XL (20 - 22), XXL (24)